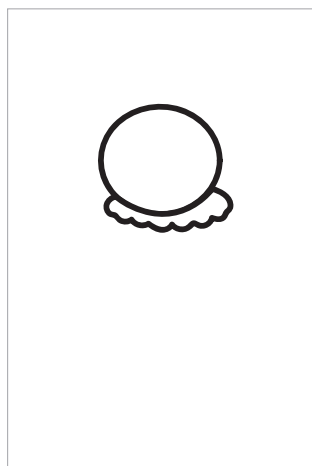
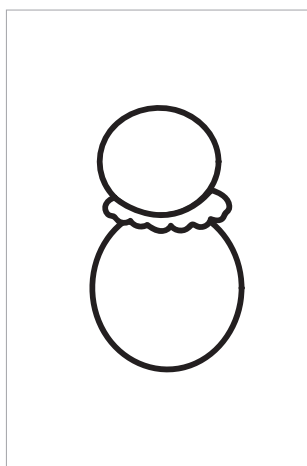


1. Draw a circle.



2. Wave lines below the circle.



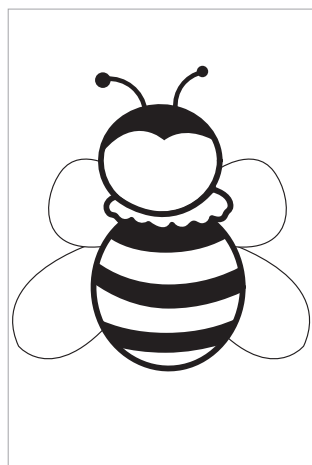
3. Another Circle.



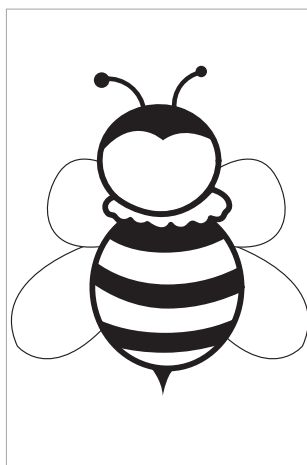
4. Add details on the body.



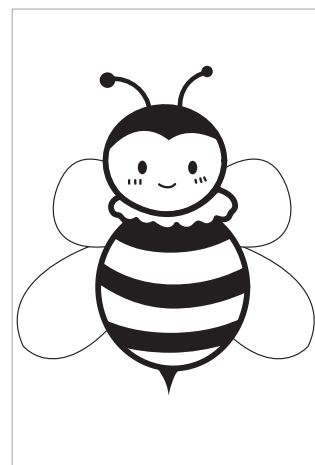
5. Add four half circle for the wings.



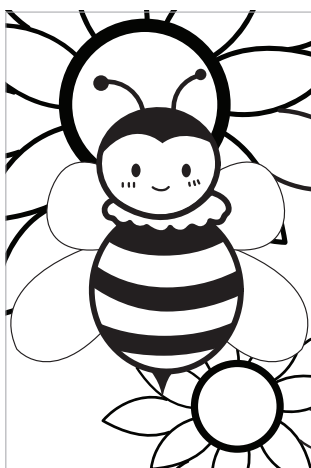
6. Add details for antennas.



7. A small triangle for the Stinger.



8. Lastly add a cute face.



9. Optinal Step - Background detail.

Facts -

1. Honey bees can fly at a speed of around 25km per hour and beat their wings 200 times per second!
2. The average worker bee lives for just five to six weeks. During this time, she'll produce around a twelfth of a teaspoon of honey.
3. The queen can live up to five years. She is busiest in the summer months, when she can lay up to 2,500 eggs a day!
4. Bees have been here about 30 million years.
5. An average beehive can hold around 50,000 bees