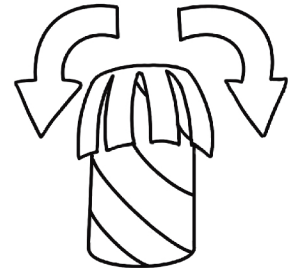


Mushroom Crafts

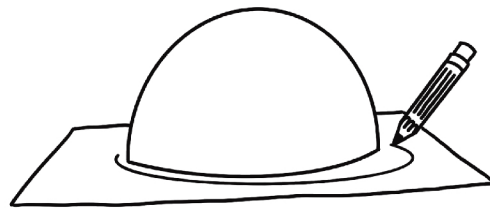
On your toilet paper carton, design and color in a pattern of your liking using your crayons or markers. Using your scissors, make vertical cuts all around one of the ends of the toilet paper roll.



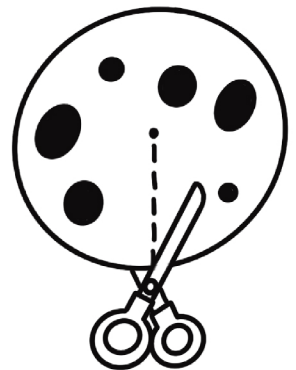
Then, fold the cuts outwards.



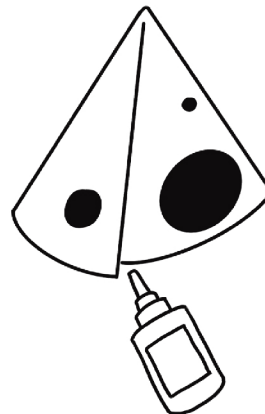
On a separate piece of paper, place your bowl upside down and trace it. Inside the traced circle, draw smaller circles and color in with your markers or crayons however you like. Cut out the big circle and draw a dot in the middle.



Using the scissors, make one cut up to the middle of your circle.



On the back side of one of the sides of the circle, place glue. Then, glue it onto the other side, creating a cone shape.



Place glue onto the folded cuts on the toilet paper roll. Glue the cap on to the stem and hold for ten seconds.

