

Music Staff Diagram

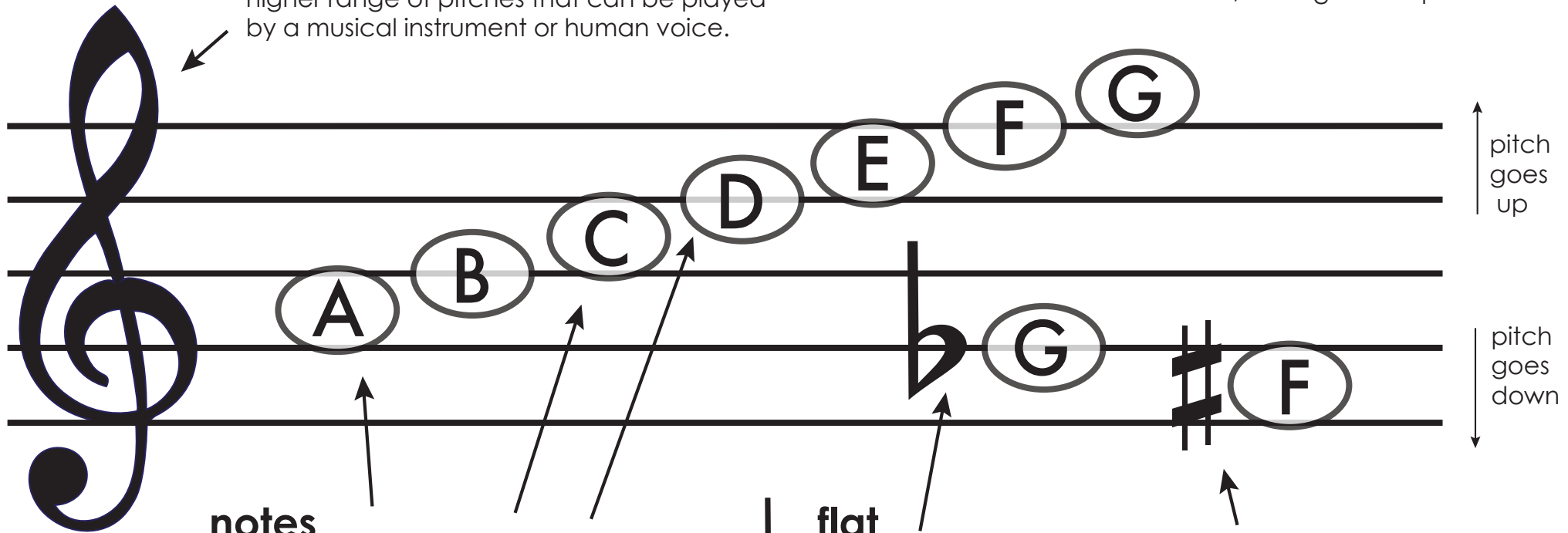
Learning to read music begins with understanding the sets of symbols we use to represent different types of sound. Get to know some essential musical vocabulary with this handout about the music staff.

Treble clef

A symbol showing what notes will be played on the staff. A treble clef indicates the higher range of pitches that can be played by a musical instrument or human voice.

staff

The set of five horizontal lines and four spaces that each represent a different musical pitch: A, B, C, D, E, F, G. The higher a note is on the staff, the higher the pitch.



notes

The symbols showing the length and pitch of a sound. Notes are represented with the alphabet letters A-G.

flat

A symbol indicating a sound is played slightly lower in pitch than the note indicated on the staff

sharp

A symbol indicating a sound is played slightly higher in pitch than the note indicated on the staff